



UNIVERSITY
OF HULL | London



**2024 Postgraduate
Courses**

In collaboration with



Cambridge
Education Group

We're delighted that you're thinking of studying here, and I hope this is the start of your extraordinary journey with us. Our London campus is a new way to access our career-focused, postgraduate courses, expert academics and leading research programmes in the heart of the UK's capital. We will offer opportunities to gain valuable industry connections and an academic and wider experience that will open your mind and boost your career.



“My name is Chris and as Dean of the University of Hull London Study Centre I welcome you to our great University and our great city!

When you join us in London, you will become part of a diverse and inclusive academic community right here in the heart of Bloomsbury, London.

We will challenge you to excel, giving you the opportunity to be part of London's enterprise culture, engaging with professionals from your chosen field of study. My team and I look forward to helping you achieve your study and career goals.”

**Mr Christopher Macallister
Dean of the University of
Hull London**

Contents

Choose University of Hull London.....	4
Explore our subjects	6
MSc Business Management	7
MSc Digital Marketing and Advertising	8
MSc Logistics and Supply Chain Management.....	9
Student support.....	10
Careers and employability.....	11
Accommodation.....	12
Guide to Bloomsbury, London.....	14
Campus map	16
Get in touch.....	19



Choose Hull London

Official
University
Partner of
Team GB



81%
of students graduate
with a First or Upper
Second class degree



Study at our
**London
campus**
for a personalised,
tailored university
experience

The University
of Hull was **rated
Gold by Teaching
Excellence
Framework
(TEF) in
2023**

TEF
2023
Gold



Founded in 1927
the University of
Hull is the **14th
oldest university**
in England

London is the business capital of Europe

Significant numbers of major companies
have chosen London for their global or
European headquarters, and it continues
to attract the largest proportion of high-
skilled talent



97.9%
of international students
go into work or further
study within six months
of graduating¹



Our **Futures Team**
can help you research and
plan your career, and put
you directly in touch with
recruiting employers

¹ HESA 2018

Explore our subjects

MSc Business Management.....	8
MSc Digital Marketing and Advertising.....	9
MSc Logistics and Supply Chain Management.....	10

Master's Programme

93.9% of our master's graduates are in work or further study 15 months after completing their course*

✓ Our expert academics are here to harness your passion and help you go deeper than ever before into the subjects you love.

✓ Like all University of Hull courses, our London Study Centre is focused on employability from beginning to end. Our emphasis on career skills, makes sure you will be prepared for the role you want to go into when you graduate, and be able to demonstrate to employers that you have what it takes. The international jobs market is highly competitive. A degree from the University of Hull is a great way to make sure your CV stands out.

✓ Did you know 93.9% of our graduates are in work or study within 15 months* of leaving the University of Hull? Well you do now. When we say we focus on developing career skills in our courses, we really mean it!

✓ Whatever subject you are passionate about, studying at Hull in London will give you access to teaching that is tailored to give students the skills and mindset they need for the future. Take a look at the courses currently on offer at University of Hull London Study Centre.

Entry Requirements ▶

- ✓ Our programmes are designed for graduates from any discipline with a strong interest in the principles and practices of relevant areas.
- ✓ A minimum of a 2:2 UK Honours degree or international equivalent and academic IELTS 6.0 overall, with 5.5 in each skill.
- ✓ We consider experience and qualifications from the UK and worldwide which may not exactly match the combinations above but it's not just about the grades - we'll look at your whole application, including your work experience. We want to know what makes you tick, and about your previous experience, so make sure that you complete your personal statement.

* Graduate Outcome Survey 2019/20



MSc Business Management

🎓 About the course

Future business managers and leaders need to possess agility, resilience, and the ability to tackle complex challenges in a carbon-neutral and digitally transformed world. Our MSc in Business Management programme prepares you for exactly that. Blending cutting-edge academic thinking with industry best practices, you'll gain the up-to-date knowledge, skills, and expertise you need to become an impactful and agile business leader.

🎓 What you'll study

Throughout the course you will develop key professional and research skills, as well as an understanding of ethical business practice. You will also undertake a final research project, which can be either a dissertation or a business-based project.

🎓 Accreditation

Our double international accreditations from the Association of MBAs (AMBA) and the Association to Advance Collegiate Schools of Business (AACSB) means you'll also be learning in a Business School that's part of an exclusive club - only around 5% of the world's 13,000 plus business programmes hold both AMBA and AACSB accreditations.



Apply today

To find out more about MSc Business Management or to apply, get in touch with our team today on contact@london.hull.ac.uk

Fees:	International: £16,000 Home: £12,100
Timetable:	2 days a week
Mode of Study:	Full Time
Scholarships:	Available
Intakes:	May 2024, September 2024
Course Length:	1 year

Core modules include:

- ✓ International Business in Practice - 20 credits
- ✓ Strategic Planning and Foresight Methods - 20 credits
- ✓ Marketing Management in Action - 20 credits
- ✓ Design-driven Business Innovation and Management - 20 credits
- ✓ Leading People & Performance - 20 credits
- ✓ Sustainable Logistics and Operations Management - 20 credits
- ✓ Dissertation (MSc Business) - 60 credits
- ✓ Study Skills and Research Methods - non credit bearing

*Advertised intakes for our programs are indicative only. All programs are subject to approval by the UKVI. Prospective students are advised to contact the London Study Centre for the most current information regarding immigration compliance and program approval status.



MSc Digital Marketing and Advertising

Apply today

To find out more about MSc Digital Marketing and Advertising or to apply, get in touch with our team today on contact@london.hull.ac.uk

Fees:	International: £16,000 Home: £12,100
Timetable:	2 days a week
Mode of Study:	Full Time
Scholarships:	Available
Intakes:	May 2024, September 2024
Course Length:	1 year

About the course

This MSc programme offers a unique opportunity to develop the knowledge and skills necessary for success in the rapidly evolving digital marketing and advertising industry. Combining the two distinct areas of digital marketing and advertising, you'll gain an authentic business learning experience through a hands-on approach designed to give you the skills most highly sought-after in today's business environment.

In addition to technical skills, this programme places a strong emphasis on leadership and teamwork development. These are cultivated through Active Blended Learning projects, group projects, case studies, and interactive discussions, preparing you to effectively collaborate with colleagues and clients in your future roles. You will also benefit from regular insights from guest speakers with a high level of senior leadership experience, drawn from our varied network of cross-sector industry partners.

What you'll study

During your first trimester you'll gain deep insights into the core areas and practices of digital marketing management. In the second trimester, you will have the opportunity to further expand your subject knowledge and gain a broader understanding of digital and social marketing techniques, as well as advertising and communication channels. You will also undertake a final research project, which can be either a dissertation or a business-based project.

Core modules include:

- ✓ Buyer Behaviour and Ethics - 20 credits
- ✓ Digital Marketing Strategy - 20 credits
- ✓ Marketing Management in Action - 20 credits
- ✓ Advertising Management - 20 credits
- ✓ Customer Experience (CX) Strategies and Techniques - 20 credits
- ✓ Social Media Marketing Management - 20 credits
- ✓ Dissertation - 60 credits
- ✓ Study Skills and Research Methods - non credit bearing

Accreditation

The programme is accredited by the IDM (Institute of Digital Marketing), giving you the opportunity to build professional awards alongside your Master's degree, equipping you with evidence to secure exciting roles in Digital and Social Media marketing.

*Advertised intakes for our programs are indicative only. All programs are subject to approval by the UKVI. Prospective students are advised to contact the London Study Centre for the most current information regarding immigration compliance and program approval status.



MSc Logistics and Supply Chain Management

Apply today

To find out more about MSc Logistics and Supply Chain Management or to apply, get in touch with our team today on contact@london.hull.ac.uk

Fees:	International: £16,000 Home: £12,100
Timetable:	2 days a week
Mode of Study:	Full Time
Scholarships:	Available
Intakes:	May 2024, September 2024
Course Length:	1 year

About the course

The world of logistics and supply chain management is increasingly unpredictable, digitised, and essential for keeping the wheels of global business turning. Drawing on vast expertise and resources from our Logistics Institute - a world-class facility based at the Business School - our MSc Logistics and Supply Chain Management will familiarise you with all the tools and techniques necessary to develop effective and efficient supply chains. You will explore current theory and research, seeing how this informs practice, and develop innovative solutions to real-life logistics and supply chain problems, equipping you to provide higher levels of value and sustainability for businesses in any part of the world.

What you'll study

Throughout the course you will develop key professional and research skills, as well as an understanding of ethical business practice. You will also undertake a final research project, which can be either a dissertation or a business-based project.

*Advertised intakes for our programs are indicative only. All programs are subject to approval by the UKVI. Prospective students are advised to contact the London Study Centre for the most current information regarding immigration compliance and program approval status.

Core modules include:

- ✓ International Trade and Global Logistics - 20 credits
- ✓ Principles of Logistics and Supply Chain Management - 20 credits
- ✓ Supply Chain Strategy and Design - 20 credits
- ✓ Decision Making Techniques for Supply Chain Management - 20 credits
- ✓ Sustainable Logistics and Operations Management - 20 credits
- ✓ Supply Chain Analytics and Information Management - 20 credits
- ✓ Dissertation - 60 credits
- ✓ Study Skills and Research Methods - non credit bearing

Accreditation

Our MSc has been accredited by the most relevant professional bodies in logistics - the Chartered Institute of Logistics and Transport (CILT) and the Chartered Institute of Procurement and Supply (CIPS) - giving you a head start in this competitive field.



Student Support

All the support you need. Before you arrive, while you're here, and even after you've left - we can help point you in the right direction.

Full support

If you are coming to our London Study Centre from overseas, we've got a full package of support ready to make the whole process as easy and stress-free as possible. From planning your move and visa applications to managing money and accessing local services, our experienced team will work with you or your agency to make it as smooth and stress-free as possible.

Getting to the UK

You can start the process of applying for a student visa [right here online](#), or download and print a visa application [form here](#). You'll find a lot more information on the visa process on the government website, and your in-country agency will be able to answer questions too.

Whatever you need, we've got it covered

Our specialist team are on-hand to help you online and in person. If you know or find you need support with learning, mental health, assistive technology, or something else entirely just [visit our support page](#). You'll find a full list along with links and assistance making appointments.

IT facilities

There are a number of additional computer and IT resources for research, assignments and printing. We'll cover everything at your first induction at 99 Gower Street.



A global community of staff, students and alumni from over 100 countries

Careers and Employability

We're as focused on your future as you are, and employability is built into our courses from day one. Because we design courses to support your career path, you know you'll be well-positioned to gain the skills, experience and contacts you need to go places and find your extraordinary.

Designed with careers in mind

Like all University of Hull courses, our London Study Centre is focused on employability from beginning to end. Our emphasis on career skills, makes sure you will be prepared for the role you want to go into when you leave, and be able to demonstrate to employers that you have what it takes.

More likely to gain a 1st or 2:1 degree¹

More likely to be in graduate jobs six months after graduation¹

More likely to earn a higher wage six months after graduation¹

- Gain CV-boosting experience, with placements, paid internships and volunteering opportunities.
- Get insider advice from your industry on our e-Mentoring programme.
- Sign up to The Hull Employability Awards to make employers stand up and take notice.
- Network with employers at workshops, jobs fairs and presentations.

The international jobs market is highly competitive. A degree from the University of Hull is a great way to make sure your CV stands out.

London as a global hub

With a higher percentage of graduates than any other city in the world, London, as the world's global financial hub, is the leading location for students looking to start their careers.



¹ UUKi Go International. Stand Out campaign 2018

london.hull.ac.uk | 11

Accommodation

Booking with us ensures that you will have a safe, comfortable environment, and that you will be housed with other Hull London students, which is a great opportunity to make friends!

Central London location

You can choose to live in the heart of the best student city in the world¹, London! You are in a prime location for an unforgettable London experience: enjoy the many restaurants, bars, local markets, and events that the city has to offer, whilst having easy access to all the essential shops and supermarkets, while also being within commuting distance of the Hull London Study Centre.

Safety and community

You will be living with your fellow Hull London classmates, creating a safe and inclusive community, ideal for making new friends.

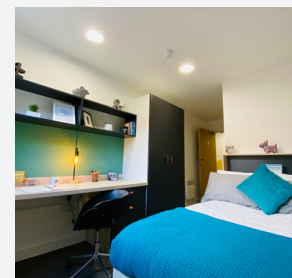
All included

WiFi and utility bills are all included in your rent, so there's no sudden increase in costs during the year.

Don't miss out

We strongly recommend booking early as accommodation in London sells out fast.

¹QS Best Student City Rankings 2024

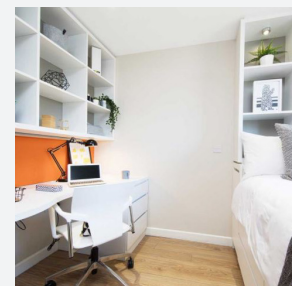


Mannequin House

Nearest tube: Blackhorse Road

Price from: £370 per week

- Wi-Fi
- Utility bills included
- Common room with TV
- Study rooms
- Games room
- Social events
- 24/7 staffed
- Laundry facilities

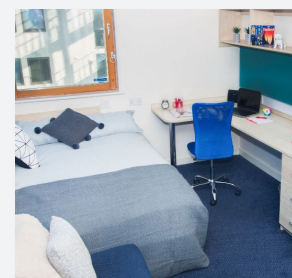


Drapery Place

Nearest tube: Aldgate East

Price from: £415 per week

- Wi-Fi
- Utility bills included
- Common area with TVs
- Multiple study spaces
- Pool and football table
- On-site gym
- Staffed 24/7
- Laundry facilities
- Outdoor social space
- CCTV

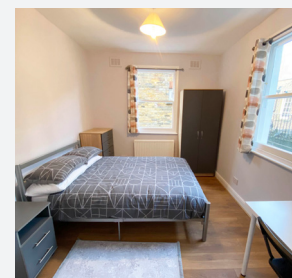


Don Gratton

Nearest tube: Whitechapel

Price from: £320 per week

- Wi-Fi
- Outdoor terrace
- Common room
- Bike storage
- Games room
- Social events
- On-site security & CCTV
- On-site laundry
- On-site maintenance.



Raleigh House

Nearest tube: Kentish Town

Price from: £270 per week

- Large communal kitchen
- Utility bills included
- Free laundry facilities
- 20 bedrooms in the property
- Community Manager living on site



To book your accommodation please contact us at livein@london.hull.ac.uk

Guide to Bloomsbury, London

Bloomsbury, a world-renowned intellectual and literary hub, was home to early twentieth-century writers, intellectuals, philosophers and artists, including author Virginia Woolf, and economist John Maynard Keynes who lived in the Georgian buildings.

Bloomsbury is an upmarket part of London, filled with tree-lined squares and beautiful 20th century Georgian architecture.



You'll find over 200+ museums in London, The iconic British Museum being one in Bloomsbury.



Take a stroll along the Southbank for a first class view of some of London's major landmarks including the London Eye, Big Ben and the fantastic skyline showing St Paul's Cathedral.

25 minute

walk to Bond Street, synonymous with luxury and designer shopping!



Russell Square

the closest and largest green park to Hull London its shady lawns are well used on a daily basis by students, tourists, and residents



125,035

International students studying in London



3 Cinemas

within a 10 minute walk of University of Hull London

Over 80

restaurants within Bloomsbury, including Indian, Thai, Italian and many more...



Five London Airports

connect the city to the rest of the world, including Heathrow Airport, which has over 170 destinations from 90 airlines.



 99 Gower Street, Bloomsbury,
London, WC1E 6AA



Hull London Study Centre



Bloomsbury Square



Get in touch

Enquiry Email

contact@london.hull.ac.uk

Website

london.hull.ac.uk

Campus Address

**99 Gower Street
Bloomsbury
London
WC1E 6AA**

Telephone Number

+44 (0)1223 345698

Please note that access to our teaching site at 99 Gower Street is via steps at the front. Internally we are unable to provide lift access but can make reasonable adjustments if required. Please contact our Student Services team if you have an accessibility concern or query.

The (not so) small print

The information in this brochure is provided by Cambridge Education Group and the University of Hull for general information purposes only. We do everything possible to keep the information up to date and correct. But we make no representations or warranties of any kind, expressed or implied. Whether about the completeness, accuracy, reliability, suitability or availability with respect to the publication or the information, products, services or related graphics contained in the publication for any purpose. Any reliance you place on this information is strictly at your own risk.

We're continually adapting and evolving our courses so that we meet the changing needs and expectations of our students and employers. We check that our programmes reflect national benchmarks; that they enhance our students' skills; that they're relevant to you and to your potential future employers; and that they meet the demands of regulatory bodies (for example, to earn accreditations that are essential in some subjects and for some professions).

What this all means is that the course information in this guide is correct at the time of going to print. But - for the reasons we outlined above - some of our courses could still change before you start your course. You can find all the latest information on the course pages of our website. Or if you have any questions or need further info, you can contact our recruitment team at **contact@london.hull.ac.uk**.



UNIVERSITY
OF HULL | London



In collaboration with



Cambridge
Education Group

01066