



UNIVERSITY  
of HULL

London



*2026/2027*  
**Postgraduate Courses**

In collaboration with



**Cambridge**  
Education Group

**We're delighted that you're thinking of studying here, and I hope this is the start of your extraordinary journey with us. Our London campus is a new way to access our career-focused, postgraduate courses, expert academics and leading research programmes in the heart of the UK's capital. We will offer opportunities to gain valuable industry connections and an academic and wider experience that will open your mind and boost your career.**



**“My name is Chris and as Dean of the University of Hull London Study Centre I welcome you to our great University and our great city!**

When you join us in London, you will become part of a diverse and inclusive academic community right here in the heart of Bloomsbury, London.

We will challenge you to excel, giving you the opportunity to be part of London's enterprise culture, engaging with professionals from your chosen field of study. My team and I look forward to helping you achieve your study and career goals.”

**Mr Christopher Macallister**  
**Dean, University of Hull**  
**London Study Centre**

# Contents

Choose University of Hull London	4-5
Explore our subjects	6-9
MSc Artificial Intelligence & Data Science	10
MSc Business Management	11
MSc Digital Marketing and Advertising	12
MSc Logistics and Supply Chain Management	13
Hear from our students	14
Student support	16-17
Careers and employability	18-19
Why Hull London	20-21
Accommodation	22-23
Guide to Bloomsbury, London	24-25
Campus map	26-27
Get in touch	

# Choose *Hull London*



Small Classrooms

Top 20 in the UK for assessment and feeding back to students in the NSS 2025.



Study at our London campus for a personalised, tailored university experience

The University of Hull was rated Gold by Teaching Excellence Framework (TEF) in 2023



London is the *business capital* of Europe

Significant numbers of major companies have chosen London for their global or European headquarters, and it continues to attract the largest proportion of highly-skilled talent

**81%**

of students graduate with a First or Upper Second class degree



Founded in 1927 the University of Hull is the 14th oldest university in England

**97.9%**

of international students go into work or further study within six months of graduating<sup>1</sup>

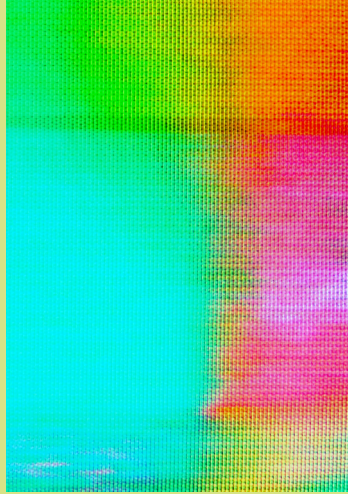
<sup>1</sup> HESA 2018

# *Explore our subjects*

MSc Artificial Intelligence & Data Science	10
MSc Business Management	11
MSc Digital Marketing and Advertising	12
MSc Logistics and Supply Chain Management	13

AI INTERFACE... NEURAL NETWORK

# Master's Programmes



**Our expert academics are here to harness your passion and help you go deeper than ever before into the subjects you love.**

Like all University of Hull courses, our London Study Centre is focused on employability from beginning to end. Our emphasis on career skills, makes sure you will be prepared for the role you want to go into when you graduate, and be able to demonstrate to employers that you have what it takes. The international jobs market is highly competitive. A degree from the University of Hull is a great way to make sure your CV stands out.

Whatever subject you are passionate about, studying at Hull in London will give you access to teaching that is tailored to give students the skills and mindset they need for the future. Take a look at the courses currently on offer at University of Hull London Study Centre.

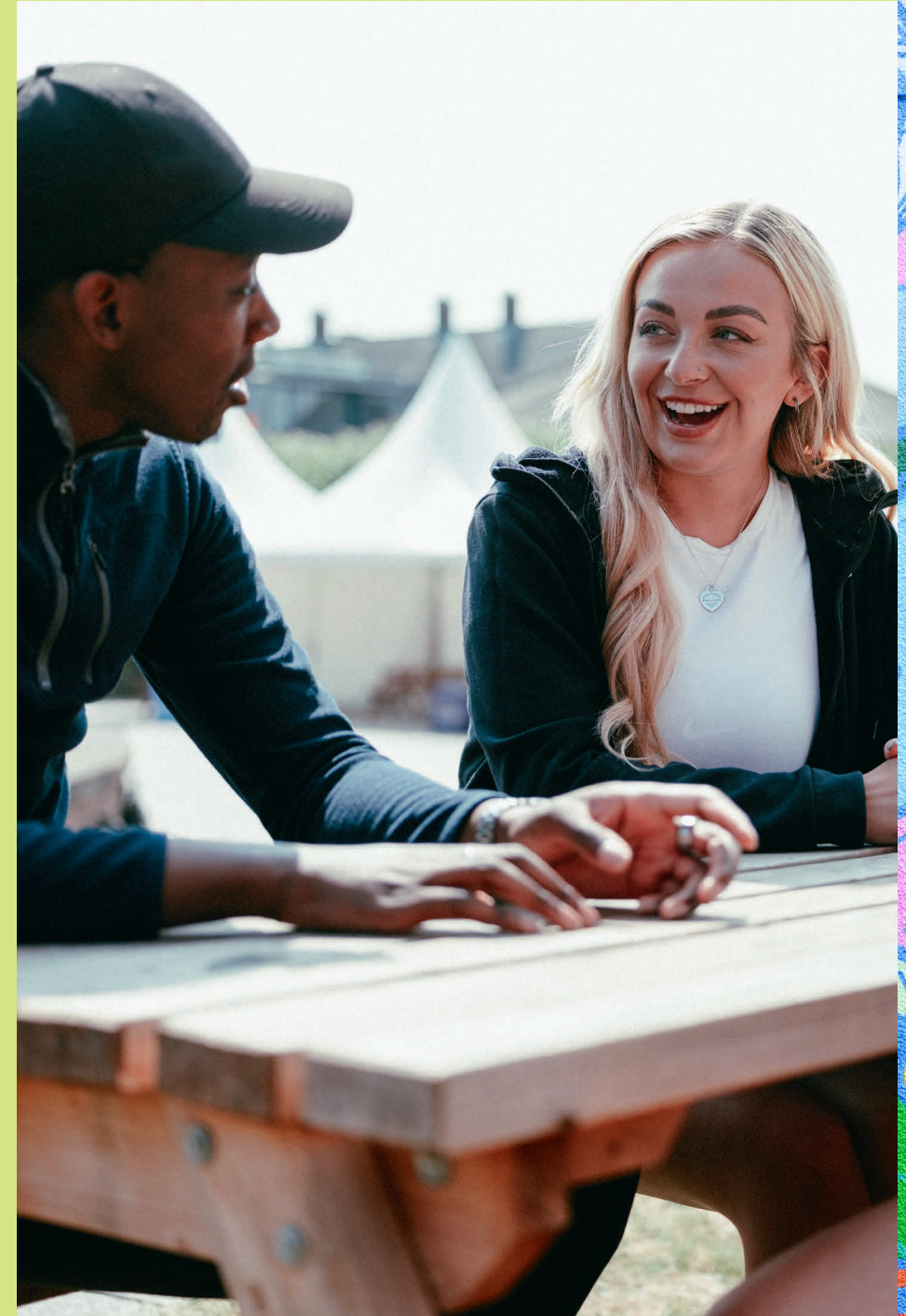
97.9% of our master's graduates are in work or further study 15 months after completing their course<sup>2</sup>

## Entry Requirements

Our programmes are designed for graduates from any discipline with a strong interest in the principles and practices of relevant areas.

A minimum of a 2:2 UK Honours degree or international equivalent.

We consider experience and qualifications from the UK and worldwide which may not exactly match the combinations above but it's not just about the grades - we'll look at your whole application, including your work experience. We want to know what makes you tick, and about your previous experience, so make sure that you complete your personal statement and attach your CV.



<sup>2</sup> Graduate Outcome Survey 2019/20

# MSc Artificial Intelligence and Data Science

## Apply today

To find out more about MSc AI and Data Science or to apply, get in touch with our team today on [contact@london.hull.ac.uk](mailto:contact@london.hull.ac.uk)



<b>Fees:</b>	International: £18,000 Home: £12,100
<b>Timetable:</b>	2 days a week
<b>Mode of Study:</b>	Full Time
<b>Scholarships:</b>	Available
<b>Intakes:</b>	January, May, September
<b>Course Length:</b>	1 year
<b>Entry Requirements</b>	2:2 UK Honours degree or international equivalent and academic IELTS 6.5 with no element below 6.0 Your degree should have strong numerical content.

## About the course

Want to change direction? Switch careers? Upskill? This Master's is for you.

This MSc is suitable for students with a range of backgrounds in STEM and non-STEM subjects.

Don't have programming experience? That's okay. You'll learn Python coding at the start of the course to make sure you're up to speed.

Unlike other universities, you'll study the full breadth of AI – not just one specialism. You'll cover programming, statistics, machine learning, big data, data visualisation, computer vision and the ethical and legal responsibilities of using data.

You can design your own research project to suit your background and career interests. Some students may be able to work on a forefront of data science.

## What you'll study

Throughout the course you will develop key professional and research skills, as well as an understanding of ethical business practice.

You will also undertake a final research project, which can be either a dissertation or a business-based project.

## Core modules include:

- ✓ Programming for AI and Data Science - 20 credits
- ✓ Fundamentals of Data Science - 20 credits
- ✓ Understanding Artificial Intelligence - 20 credits
- ✓ Big Data and Data Mining - 20 credits
- ✓ Applied Artificial Intelligence - 20 credits
- ✓ Research and Application in Artificial Intelligence and Data Science - 20 credits
- ✓ Artificial Intelligence and Data Science Research Project – 60 credits
- ✓ Study Skills and Research Methods - non credit bearing



# MSc Business Management

## Apply today

To find out more about MSc Business Management or to apply, get in touch with our team today on [contact@london.hull.ac.uk](mailto:contact@london.hull.ac.uk)



<b>Fees:</b>	International: £17,000 Home: £12,100
<b>Timetable:</b>	2 days a week
<b>Mode of Study:</b>	Full Time
<b>Scholarships:</b>	Available
<b>Intakes:</b>	January, May, September
<b>Course Length:</b>	1 year
<b>Entry Requirements</b>	2:2 UK Honours degree or international equivalent and academic IELTS 6.0 overall, with 5.5 in each skill.

## About the course

Future business managers and leaders need to possess agility, resilience, and the ability to tackle complex challenges in a carbon-neutral and digitally transformed world. Our MSc in Business Management programme prepares you for exactly that. Blending cutting-edge academic thinking with industry best practices, you'll gain the up-to-date knowledge, skills, and expertise you need to become an impactful and agile business leader.

## What you'll study

Throughout the course you will develop key professional and research skills, as well as an understanding of ethical business practice. You will also undertake a final research project, which can be either a dissertation or a business-based project.

## Accreditation

Our double international accreditations from the Association of MBAs (AMBA) and the Association to Advance Collegiate Schools of Business (AACSB) means you'll also be learning in a Business School that's part of an exclusive club – only around 5% of the world's 13,000 plus business programmes hold both AMBA and AACSB accreditations.

<sup>3</sup> Graduate Outcomes 2019/20

## Core modules include:

- ✓ International Business in Practice - 20 credits
- ✓ Strategic Planning and Foresight Methods - 20 credits
- ✓ Marketing Management for Business - 20 credits
- ✓ Design-driven Business Innovation and Management - 20 credits
- ✓ Leading People & Performance - 20 credits
- ✓ Sustainable Logistics and Operations Management – 20 credits
- ✓ Dissertation (MSc Business) – 60 credits
- ✓ Study Skills and Research Methods - non credit bearing



# MSc Digital Marketing and Advertising

## Apply today

To find out more about MSc Digital Marketing and Advertising or to apply, get in touch with our team today on [contact@london.hull.ac.uk](mailto:contact@london.hull.ac.uk)



## About the course

This MSc programme offers a unique opportunity to develop the knowledge and skills necessary for success in the rapidly evolving digital marketing and advertising industry. Combining the two distinct areas of digital marketing and advertising, you'll gain an authentic business learning experience through a hands-on approach designed to give you the skills most highly sought-after in today's business environment.

In addition to technical skills, this programme places a strong emphasis on leadership and teamwork development. These are cultivated through Active Blended Learning projects, group projects, case studies, and interactive discussions, preparing you to effectively collaborate with colleagues and clients in your future roles. You will also benefit from regular insights from guest speakers with a high level of senior leadership experience, drawn from our varied network of cross-sector industry partners.

## What you'll study

During your first trimester you'll gain deep insights into the core areas and practices of digital marketing management. In the second trimester, you will have the opportunity to further expand your subject knowledge and gain a broader understanding of digital and social marketing techniques, as well as advertising and communication channels. You will also undertake a final research project, which can be either a dissertation or a business-based project.

<b>Fees:</b>	International: £17,000 Home: £12,100
<b>Timetable:</b>	2 days a week
<b>Mode of Study:</b>	Full Time
<b>Scholarships:</b>	Available
<b>Intakes:</b>	January, May, September
<b>Course Length:</b>	1 year
<b>Entry Requirements</b>	2:2 UK Honours degree or international equivalent and academic IELTS 6.0 overall, with 5.5 in each skill.

## Core modules include:

- ✓ Buyer Behaviour and Ethics - 20 credits
- ✓ Digital Marketing Strategy - 20 credits
- ✓ Marketing Management in Action - 20 credits
- ✓ Advertising Management - 20 credits
- ✓ Customer Experience (CX) Strategies and Techniques - 20 credits
- ✓ Social Media Marketing Management - 20 credits
- ✓ Dissertation - 60 credits
- ✓ Study Skills and Research Methods - non credit bearing

## Accreditation

The programme is accredited by the IDM (Institute of Digital Marketing), giving you the opportunity to build professional awards alongside your Master's degree, equipping you with evidence to secure exciting roles in Digital and Social Media marketing.



# MSc Logistics and Supply Chain Management

## Apply today

To find out more about MSc Logistics and Supply Chain Management or to apply, get in touch with our team today on [contact@london.hull.ac.uk](mailto:contact@london.hull.ac.uk)



<b>Fees:</b>	International: £17,000 Home: £12,000
<b>Timetable:</b>	2 days a week
<b>Mode of Study:</b>	Full Time
<b>Scholarships:</b>	Available
<b>Intakes:</b>	January, May, September
<b>Course Length:</b>	1 year
<b>Entry Requirements</b>	2:2 UK Honours degree or international equivalent and academic IELTS 6.0 overall, with 5.5 in each skill.

## About the course

The world of logistics and supply chain management is increasingly unpredictable, digitised, and essential for keeping the wheels of global business turning. Drawing on vast expertise and resources from our Logistics Institute – a world-class facility based at the Business School – our MSc Logistics and Supply Chain Management will familiarise you with all the tools and techniques necessary to develop effective and efficient supply chains. You will explore current theory and research, seeing how this informs practice, and develop innovative solutions to real-life logistics and supply chain problems, equipping you to provide higher levels of value and sustainability for businesses in any part of the world.

## What you'll study

Throughout the course you will develop key professional and research skills, as well as an understanding of ethical business practice. You will also undertake a final research project, which can be either a dissertation or a business-based project.

## Core modules include:

- ✓ International Trade and Global Logistics - 20 credits
- ✓ Principles of Logistics and Supply Chain Management - 20 credits
- ✓ Supply Chain Strategy and Design - 20 credits
- ✓ Decision Making Techniques for Supply Chain Management - 20 credits
- ✓ Sustainable Logistics and Operations Management - 20 credits
- ✓ Supply Chain Analytics and Information Management - 20 credits
- ✓ Dissertation - 60 credits
- ✓ Study Skills and Research Methods - non credit bearing

## Accreditation

Our MSc has been accredited by the most relevant professional bodies in logistics – the Chartered Institute of Logistics and Transport (CILT) and the Chartered Institute of Procurement and Supply (CIPS) – giving you a head start in this competitive field.



# Student and Staff Testimonials



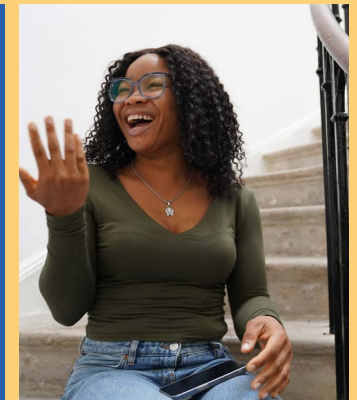
“I am very interested in sustainability and green energy and I found the course and modules offered at the University of Hull London would give me a wider picture and knowledge in this field. I have made a lot of friends from a wide range of countries and discovered cultures I haven’t ever experienced before which is amazing.

London is a very charming city, full of stories, tales and history and I’ve been to many historical sites such as The Tower of London, Big Ben and Westminster Abbey. For students, transportation in the city is very good, you can take a tube everywhere which makes travel very convenient. When I graduate, I plan to put the skills I’ve learnt from my Master’s to use, to help develop my country’s transport system further, sustainably.”

Jasmine, Thai  
Studied MSc Logistics and Supply Chain Management

“I love how interactive the classes are and how friendly the lecturers are. They’re always approachable for questions about assignments or anything we’re unclear about. Settling in was easy, and staff encouraged us to ask for help if needed. Moving to a new country can be tough but I’ve had no problems.”

Emmanuella, Nigerian.  
Studied MSc Digital Marketing and Advertising



“What makes any student successful is an eagerness to learn and an excitement to solve real life problems with coordination, collaboration, planning and critical thinking. What I enjoy most about working at the University of Hull London is the diversity. I get a chance to mentor a diverse student body and to work with a diverse academic community that we have here.”

Areeba Iqbal,  
Lecturer and Programme Leader

“The University of Hull had good rankings, 44th overall and gold ranking in TEF so that influenced my decision to choose it. Compared to India the teaching system is very different and I like the way teachers are very practical.”

Karthik, Indian  
Studied MSc Business Management



# Student Support

All the support you need. Before you arrive, while you're here, and even after you've left - we can help point you in the right direction.

## Full support

If you are coming to our London Study Centre from overseas, we've got a full package of support ready to make the whole process as easy and stress-free as possible. From planning your move and visa applications to managing money and accessing local services, our experienced team will work with you or your agency to make it as smooth and stress-free as possible.

## Getting to the UK

You can start the process of applying for a student visa at [gov.uk/student-visa/apply](http://gov.uk/student-visa/apply), or download and print a visa application [gov.uk/check-uk-visa](http://gov.uk/check-uk-visa). You'll find a lot more information on the visa process on the government website, and your in-country agency will be able to answer questions too.

## Whatever you need, we've got it covered

Our specialist team are on-hand to help you online and in person. If you know or find you need support with learning, mental health, assistive technology, or something else entirely just visit [hull.ac.uk/choose-hull/student-life/student-support](http://hull.ac.uk/choose-hull/student-life/student-support). You'll find a full list along with links and assistance making appointments.

## IT facilities

There are a number of additional computer and IT resources for research, assignments and printing. We'll cover everything at your first induction at 99 Gower Street.

With our team of academics, advisers and experts by your side, there's no stopping *you*.



## Access to resources

All the core resources, for all your modules, will be available through the University's online library.



## Students' Union

As members of Hull University Students' Union, we will enable you to connect with the student communities in London. Through our unique Graduate Professional Networking Initiative, we will give you the opportunity to engage with your professional world and take part in professional activities competing and cooperating with students from different campuses and institutions.

Nothing should get in the way of reaching your personal best. With our team of academics, advisers and experts by your side, there's no stopping you.



A global community of staff, students and alumni from over 100 countries



Our support. Your hard work.  
*Together unstoppable.*

# Careers and Employability

We're as focused on your future as you are, and employability is built into our courses from day one. Because we design courses to support your career path, you know you'll be well-positioned to gain the skills, experience and contacts you need to go places and find your extraordinary.

## Designed with careers in mind

Like all University of Hull courses, our London Study Centre is focused on employability from beginning to end. Our emphasis on career skills, makes sure you will be prepared for the role you want to go into when you leave, and be able to demonstrate to employers that you have what it takes.

- Gain CV-boosting experience to secure placements, paid internships and volunteering opportunities.
- Get insider advice from industry experts
- Network with employers at workshops, jobs fairs and presentations.

## London as a global hub

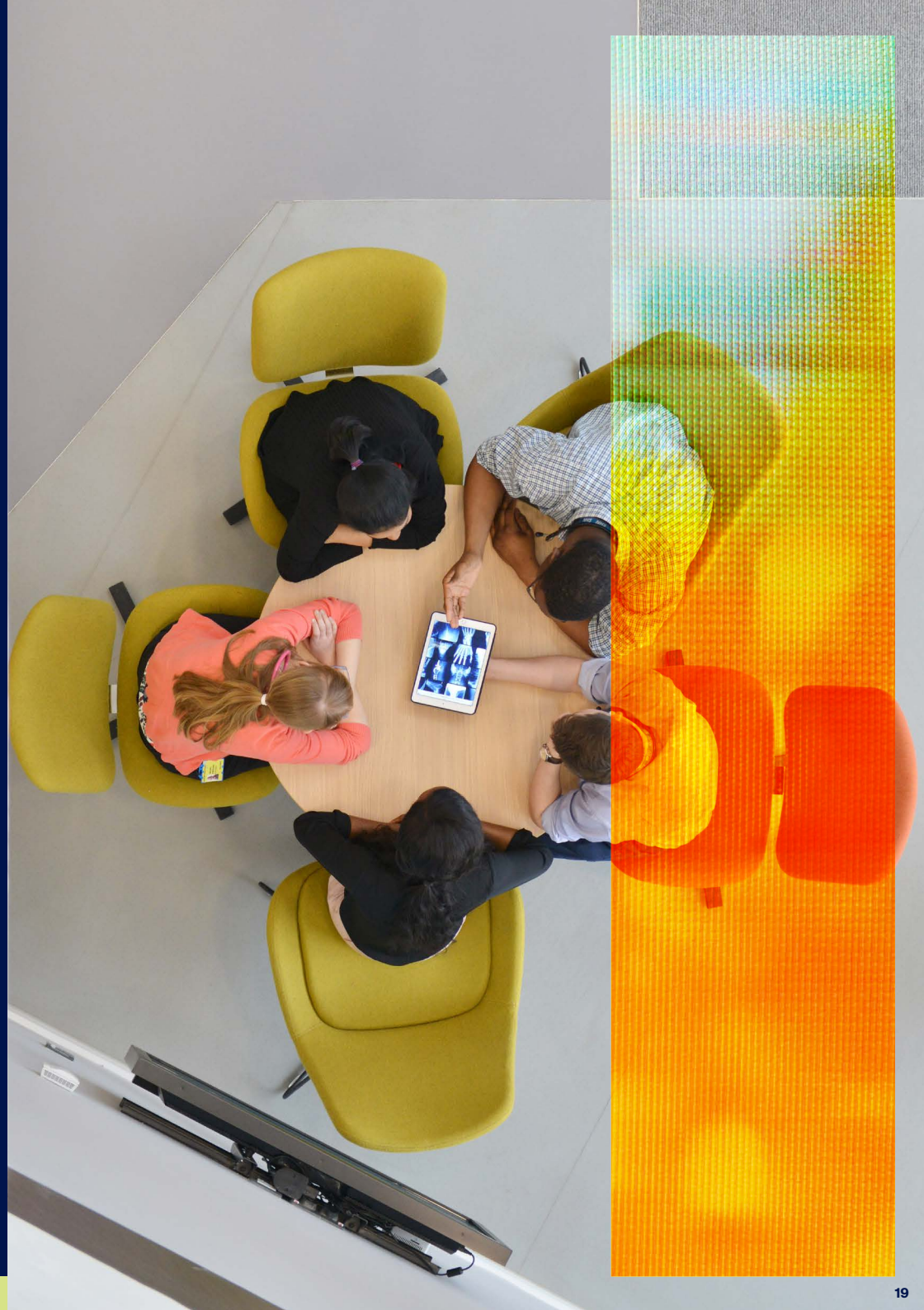
With a higher percentage of graduates than any other city in the world, London, as the world's global financial hub, is the leading location for students looking to start their careers.

The international jobs market is highly competitive. A degree from the University of Hull is a great way to make sure your CV stands out.

*More likely* to gain a 1st or 2:1 degree <sup>1</sup>

*More likely* to be in graduate jobs six months after graduation <sup>1</sup>

*More likely* to earn a higher wage six months after graduation <sup>1</sup>



<sup>1</sup> UUKi Go International: Stand Out campaign 2018

# Why Hull London?

**When you join Hull, you're a valued member of a tight-knit community where the lecturers know your name. This is a place where everyone matters. A place for all ages, all backgrounds, all walks of life. It's no coincidence that "friendly" is the word most of our students use to describe Hull. So whoever you are, there'll be like-minded people here. You just have to find them. And that starts now.**

## Personalised approach

- The university is well-equipped to support mature students with their studies through student services and teaching support services.
- Small class sizes, around 25-30 students per classroom.
- Given that it's a small study centre, there is a strong sense of academic community, connection and support.



## Excellence in teaching

- One of the oldest universities in the UK (number 14th) – founded back in 1927.
- Excellence award (TEF Teaching Excellence Framework) in teaching based on years of experience.
- Assessments based on real-life projects better prepare students to address work challenges.
- Programmes and teaching is focused on employability and ensuring students are more likely to secure work after studies.
- CV writing support and interview prep.



## Small university centre in the heart of London

- A central London location in the middle of Bloomsbury known as a university hub with other universities nearby.
- University encourages a multicultural environment celebrating events and festivals from all cultures.
- Mix of students from different backgrounds and life stages, mix of fresh graduates along with the mature students with plenty of past work experience.
- High student-to-lecturer ratio because of the small class sizes.



# Accommodation

**Booking with us ensures that you will have a safe, comfortable environment, and that you will be housed with other Hull London students, which is a great opportunity to make friends!**

## Central London location

You can choose to live in the heart of the best student city in the world<sup>1</sup>, London! You are in a prime location for an unforgettable London experience: enjoy the many restaurants, bars, local markets, and events that the city has to offer, whilst having easy access to all the essential shops and supermarkets, while also being within commuting distance of the Hull London Study Centre.

## Safety and community

You will be living with your fellow Hull London classmates, creating a safe and inclusive community, ideal for making new friends.

## All included

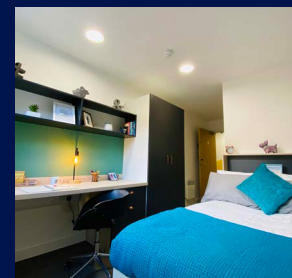
WiFi and utility bills are all included in your rent, so there's no sudden increase in costs during the year.

## Don't miss out

We strongly recommend booking early as accommodation in London sells out fast.



<sup>1</sup>QS Best Student City Rankings 2024



## Mannequin House Nearest tube: Blackhorse Road

**Price from: £370 per week**

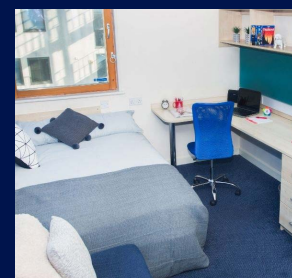
- 📶 Wi-Fi
- 🔌 Utility bills included
- 📺 Common room with TV
- 📖 Study rooms
- 🎮 Games room
- 👥 Social events
- 🕒 24/7 staffed
- 👕 Laundry facilities



## Drapery Place Nearest tube: Aldgate East

**Price from: £415 per week**

- 📶 Wi-Fi
- 🔌 Utility bills included
- 📺 Common area with TVs
- 📖 Multiple study spaces
- 🎮 Pool and football table
- 👥 On-site gym
- 🕒 Staffed 24/7
- 👕 Laundry facilities
- 🌿 Outdoor social space
- 📹 CCTV



## Don Gratton Nearest tube: Whitechapel

**Price from: £320 per week**

- 📶 Wi-Fi
- 🏡 Outdoor terrace
- 📺 Common room
- 🚲 Bike storage
- 🎮 Games room
- 👥 Social events
- 🕒 On-site security & CCTV
- 👕 On-site laundry
- ⚙️ On-site maintenance



## Raleigh House Nearest tube: Kentish Town

**Price from: £270 per week**

- 📶 Large communal kitchen
- 🔌 Utility bills included
- 👕 Free laundry facilities
- 🛏️ 20 bedrooms in the property
- 👥 Community Manager living on site

**To book your accommodation please contact us at [livein@london.hull.ac.uk](mailto:livein@london.hull.ac.uk)**

# Guide to Bloomsbury, *London*

**Bloomsbury, a world-renowned intellectual and literary hub, was home to early twentieth-century writers, intellectuals, philosophers and artists, including author Virginia Woolf, and economist John Maynard Keynes who lived in the Georgian buildings.**

Bloomsbury is an upmarket part of London, filled with tree-lined squares and beautiful 20th century Georgian architecture.



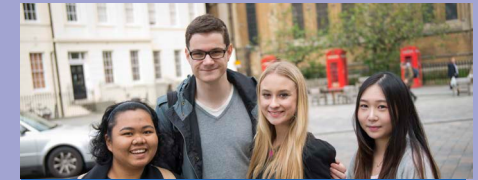
You'll find over 200+ museums in London, The iconic British Museum being one in Bloomsbury.



Take a stroll along the Southbank for a first class view of some of London's major landmarks including the London Eye, Big Ben and the fantastic skyline showing St Paul's Cathedral.

**25 minute**

walk to Bond Street, synonymous with luxury and designer shopping!



**125,035**

International students studying in London

**Russell Square**

is the closest and largest green park to Hull London. Its shady lawns are well used on a daily basis by students, tourists, and residents



**3 Cinemas**

within a 10 minute walk of University of Hull London



**Over 80**

restaurants within Bloomsbury, including Indian, Thai, Italian and many more...



**Five London Airports**

connect the city to the rest of the world, including Heathrow Airport, which has over 170 destinations from 90 airlines.



99 Gower Street, Bloomsbury,  
London, WC1E 6AA

Hull London Study Centre



Bloomsbury Square





# Get in touch

## Enquiry Email

[contact@london.hull.ac.uk](mailto:contact@london.hull.ac.uk)

## Website

[london.hull.ac.uk](http://london.hull.ac.uk)

## Campus Address

**99 Gower Street  
Bloomsbury  
London  
WC1E 6AA**

## Telephone Number

**+44 (0)204 536 4600**

**Please note that access to our teaching site at 99 Gower Street is via steps at the front. Internally we are unable to provide lift access but can make reasonable adjustments if required. Please contact our Student Services team if you have an accessibility concern or query.**

## The *(not so)* small print

The information in this brochure is provided by Cambridge Education Group and the University of Hull for general information purposes only. We do everything possible to keep the information up to date and correct. But we make no representations or warranties of any kind, expressed or implied. Whether about the completeness, accuracy, reliability, suitability or availability with respect to the publication or the information, products, services or related graphics contained in the publication for any purpose. Any reliance you place on this information is strictly at your own risk.

We're continually adapting and evolving our courses so that we meet the changing needs and expectations of our students and employers. We check that our programmes reflect national benchmarks; that they enhance our students' skills; that they're relevant to you and to your potential future employers; and that they meet the demands of regulatory bodies (for example, to earn accreditations that are essential in some subjects and for some professions).

What this all means is that the course information in this guide is correct at the time of going to print. But – for the reasons we outlined above – some of our courses could still change before you start your course. You can find all the latest information on the course pages of our website. Or if you have any questions or need further info, you can contact our recruitment team at [contact@london.hull.ac.uk](mailto:contact@london.hull.ac.uk).

**Contact us at [contact@london.hull.ac.uk](mailto:contact@london.hull.ac.uk)**



# *Defying* convention to break new ground

In collaboration with



**Cambridge**  
Education Group



UNIVERSITY  
of **HULL**

| London